

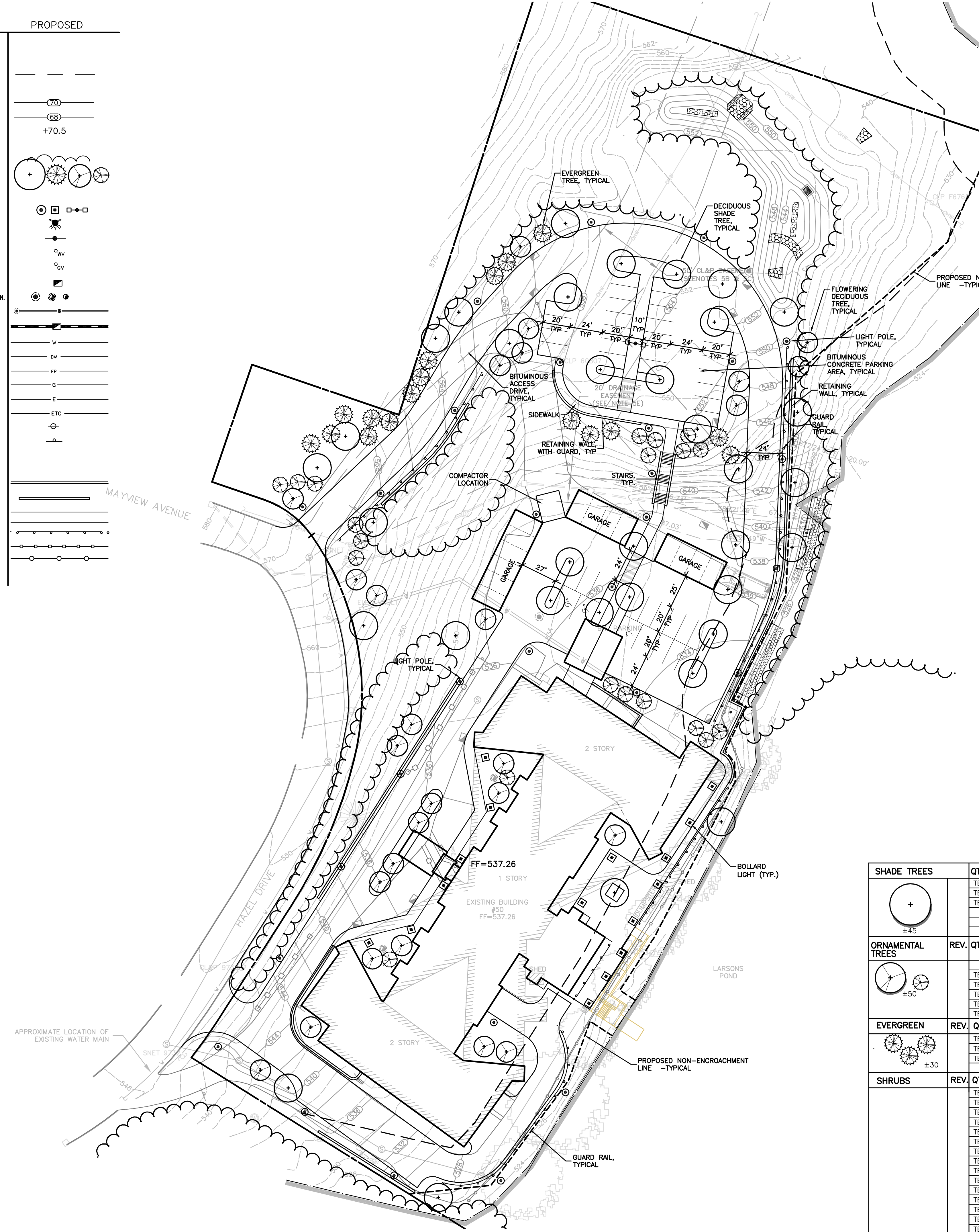
Engineering, Architecture  
and Environmental Science  
**MILONE & MACBROOM**  
99 Realty Drive  
Cheshire, Connecticut 06410  
(203) 271-1773 Fax (203) 272-9733  
www.miloneandmacbroom.com

REVISIONS
JUNE 24, 2005
JULY 12, 2005
SEPT. 6, 2005

SITE PLAN - LAYOUT AND LANDSCAPING  
**LARSENS LANDING**  
 HAZEL DRIVE  
 CHESHIRE, CONNECTICUT

RDS	JJH	-
DESIGNED	DRAWN	CHECKED
SCALE <b>1"=40'</b>		
DATE <b>MAY 16, 2005</b>		
PROJECT NO. <b>2532-01</b>		
<b>2</b>		

EXISTING	PROPOSED
STREET LINE	STREET LINE
PROPERTY LINE	PROPERTY LINE
WETLAND SETBACK LINE	WETLAND SETBACK LINE
SETBACK LINE	SETBACK LINE
MAJOR CONTOUR	MAJOR CONTOUR
MINOR CONTOUR	MINOR CONTOUR
SPOT GRADE	SPOT GRADE
WETLANDS	WETLANDS
TREE LINE	TREE LINE
TREE/SHRUB	TREE/SHRUB
STONEWALL	STONEWALL
SITE LIGHT	SITE LIGHT
HYDRANT	HYDRANT
WATER METER	WATER METER
WATER VALVE	WATER VALVE
GAS VALVE	GAS VALVE
CATCH BASIN	CATCH BASIN
MANHOLE/YARD DRAIN/AREA DRN.	MANHOLE/YARD DRAIN/AREA DRN.
SANITARY SEWER W/MANHOLE	SANITARY SEWER W/MANHOLE
STORM DRAIN W/CATCH BASIN	STORM DRAIN W/CATCH BASIN
WATER MAIN	WATER MAIN
DOMESTIC WATER	DOMESTIC WATER
FIRE PROTECTION WATER	FIRE PROTECTION WATER
GAS MAIN	GAS MAIN
ELECTRIC LINE	ELECTRIC LINE
ELECTRIC, TELEPHONE, CABLE	ELECTRIC, TELEPHONE, CABLE
UTILITY POLE	UTILITY POLE
TRAFFIC SIGN	TRAFFIC SIGN
IRON PIPE	IRON PIPE
MONUMENT	MONUMENT
EDGE OF PAVEMENT W/CURB	EDGE OF PAVEMENT W/CURB
RETAINING WALL	RETAINING WALL
SIDEWALK	SIDEWALK
GUARD RAIL	GUARD RAIL
PICKET FENCE	PICKET FENCE
CHAIN LINK FENCE	CHAIN LINK FENCE
BARBWIRE FENCE	BARBWIRE FENCE



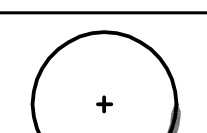
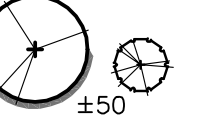
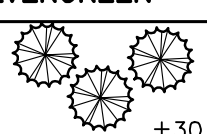

**PLANTING NOTES**

1. THE CONTRACTOR SHALL VERIFY THE LOCATION OF ALL UNDERGROUND UTILITIES PRIOR TO EXCAVATING PLANT PITS
2. THE LANDSCAPE CONTRACTOR SHALL PROVIDE A 6" MINIMUM DEPTH OF TOPSOIL FOR ALL LAWN AREAS. INSTALL SOD AROUND NEW BUILDING. WATER AS NECESSARY TO ESTABLISH SOD.
3. ALL PLANTING BEDS SHALL HAVE 12" MINIMUM DEPTH OF TOPSOIL.
4. THE LANDSCAPE CONTRACTOR SHALL PROVIDE A 4" MIN. DEPTH OF SHREDDED MULCH OVER ALL PLANTING BEDS AND TREE PLANTINGS.
5. ALL PLANT MATERIAL IS SUBJECT TO INSPECTION AND APPROVAL BY THE LANDSCAPE ARCHITECT PRIOR TO AND AFTER PLANTING.
6. PLANT SPECIES MAY BE ADJUSTED BASED ON AVAILABILITY AT TIME OF PLANTING. ALL PLANT MATERIAL SUBSTITUTIONS ARE SUBJECT TO REVIEW AND APPROVAL BY THE LANDSCAPE ARCHITECT.
7. ALL PLANT MATERIALS SHALL CARRY A FULL GUARANTEE FOR A PERIOD OF ONE YEAR FROM THE DATE OF ACCEPTANCE. TO INCLUDE PROMPT TREATMENT OR REMOVAL AND REPLACEMENT OF ANY PLANTS FOUND TO BE IN AN UNHEALTHY CONDITION BY THE LANDSCAPE ARCHITECT. ALL REPLACEMENTS SHALL BE OF THE SAME KIND AND SIZE OF PLANTS SPECIFIED IN THE PLANT LIST.
8. MAINTENANCE SHALL BEGIN IMMEDIATELY AFTER PLANTING AND SHALL CONTINUE UNTIL ACCEPTANCE BY THE LANDSCAPE ARCHITECT. MAINTENANCE SHALL INCLUDE WATERING, MULCHING, TIGHTENING & REPLACING OF GUYS, REPLACEMENT OF SICK OR DEAD PLANTS, RESETTING PLANTS TO PROPER GRADE OR UPRIGHT (PLUMB) POSITION, RESTORATION OF SAUCERS, AND ALL OTHER CARE NEEDED FOR PROPER GROWTH OF THE PLANTS.
9. WHERE A SIZE RANGE IS SPECIFIED AT LEAST 50% OF PLANTS PROVIDED SHALL BE OF THE LARGER SIZE.
10. CONTRACTOR TO REMOVE TREE STAKES AFTER ONE GROWING SEASON.

**ABBREVIATIONS**

- REV. = REVISION  
 QTY. = QUANTITY  
 SPR. = SPREAD  
 HT. = HEIGHT  
 B&B = BALL AND BURLAP  
 GAL. = GALLON  
 CAL. = CALIPER  
 CONT. = CONTAINER  
 MIN. = MINIMUM

**PLANT LIST**

SHADE TREES	QTY.	KEY	BOTANICAL NAME	COMMON NAME	SIZE	COMMENTS	
 ±45	TBD	AR	Acer rubrum 'Armstrong'	Armstrong Red Maple	2.5"-3.0" CAL	B & B, 6' MIN. BRANCHING HT.	
	TBD	FP	Fraxinus pennsylvanica 'Patmore'	Patmore Green Ash	3.0"-3.5" CAL	B & B, 6' MIN. BRANCHING HT.	
	TBD	QR	Quercus rubra	Northern Red Oak	2.5"-3.0" CAL	B & B, 6' MIN. BRANCHING HT.	
NOTE: ALL TREES SHALL BE SPECIMEN QUALITY							
ORNAMENTAL TREES	REV.	QTY.	KEY	BOTANICAL NAME	COMMON NAME	SIZE	COMMENTS
 ±50	TBD	BN	Betula nigra 'Heritage'	Heritage River Birch	8'-10' HT.	B & B, MULTISTEM	
	TBD	CC	Cercis canadensis	Eastern Redbud	2"-2.5" CAL.	B & B, FULL & DENSE	
	TBD	CF	Cornus florida 'Cherokee Chief'	Cherokee Chief Dogwood	2"-2.5" CAL.	B & B, FULL & DENSE	
	TBD	VD	Viburnum dentatum	Arrowwood Viburnum	5'-6" HT.	B & B, FULL & DENSE	
	TBD	VL	Viburnum lantana	Wayfaring Tree	3'-4" HT.	B & B, FULL & DENSE	
EVERGREEN	REV.	QTY.	KEY	BOTANICAL NAME	COMMON NAME	SIZE	COMMENTS
 ±30	TBD	PG	Picea pungens 'Glauca'	Colorado Blue Spruce	5'-6" HT.	B & B, FULL & DENSE	
	TBD	PF	Pinus flexilis	Limber Pine	8'-10" HT.	B & B, FULL & DENSE	
	TBD	PR	Pinus rigida	Pitch Pine	6'-8" HT.	B & B, FULL & DENSE	
SHRUBS	REV.	QTY.	KEY	BOTANICAL NAME	COMMON NAME	SIZE	COMMENTS
 ±30	TBD	CS	Cotoneaster salicifolius	Willowleaf Cotoneaster	18"-24" SPD.	FULL & DENSE	
	TBD	ICB	Ilex x meserveae 'China Boy'	China Boy Holly	24"-30" HT.	FULL & DENSE	
	TBD	ICG	Ilex x meserveae 'China Girl'	China Girl Holly	24"-30" HT.	FULL & DENSE	
	TBD	IG	Ilex glabra 'Compacta'	Compact Inkberry	24"-30" HT.	FULL & DENSE	
	TBD	JP	Juniperus chinensis 'Bluepoint'	Bluepoint Juniper	3'-4" HT.	FULL & DENSE	
	TBD	JS	Juniperus chinensis 'Sargent Glauca'	Sargent Glauca Juniper	18"-24" SPD.	FULL & DENSE	
	TBD	PC	Myrica pensylvanica	Northern Bayberry	3'-4" HT.	FULL & DENSE	
	TBD	PG	Prunus maritima	Beach Plum	3 GAL.	FULL & DENSE	
	TBD	PJ	Potentilla 'Jackmani'	Jackmani Potentilla	3 GAL.	FULL & DENSE	
	TBD	PW	Potentilla 'White'	White Potentilla	3 GAL.	FULL & DENSE	
	TBD	RN	Rhododendron nova zembia	Nova Zembia Rhododendron	24"-30" HT.	FULL & DENSE	
	TBD	RP	Rhododendron 'PJM'	PJM Rhododendron	24"-30" HT.	FULL & DENSE	
	TBD	RM	Rosa meidland 'Royal Bonica'	Royal Bonica Rose	18"-24" HT.	FULL & DENSE	
	TBD	SW	Spiraea x bumalda 'Anthony Waterer'	Anthony Waterer Spiraea	3 GAL.	FULL & DENSE	
	TBD	SP	Spiraea x bumalda 'Little Princess'	Little Princess Spiraea	3 GAL.	FULL & DENSE	

C:\askproj\2532-01.dwg\Current\Layout.dwg, 9/20/05 3:11:00 PM