
Community Forum
Student & Parent Survey Results
Tuesday, October 14, 2008



cheshirecoalition
tostopunderagedrinking

Who are We?

- Cheshire Coalition to Stop Underage Drinking was started in 2000 by Cheshire public schools and is now a program of Cheshire Youth and Social Services. It focuses on a comprehensive approach to underage drinking prevention.
 - Cheshire was one of 27 communities to receive the Strategic Prevention Framework State Incentive Grant from the Department of Mental Health and Addiction Services and the Substance Abuse and Mental Health Services Administration. It is a three year grant focusing on underage drinking prevention.
 - Focuses of the grant include data collection, law enforcement efforts and community education and awareness.
-

The Process

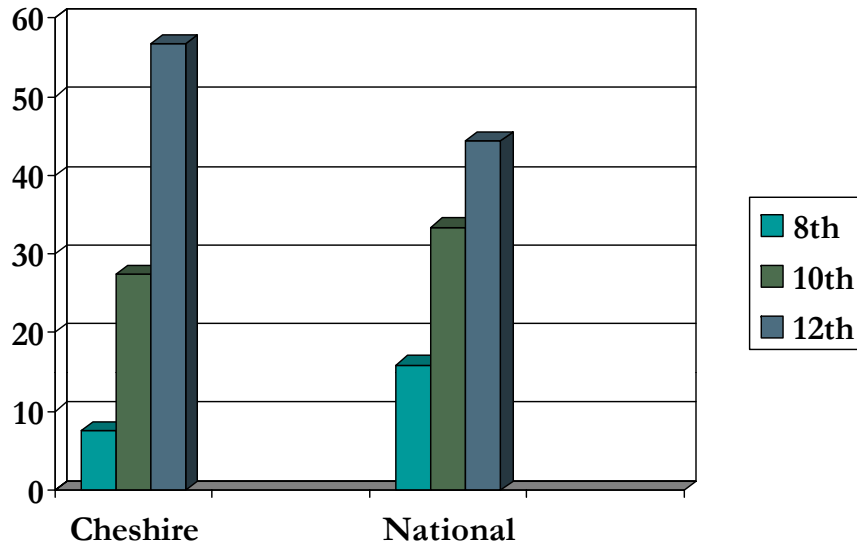
- Youth Services Committee met with the Superintendent's office and the Board of Education members to begin conversations around having a school survey.
 - CCSUD received funding in October 2006 for activities which included data collection.
 - Youth Services, CCSUD and school administrators examined a number of surveys.
 - Governor's Prevention Initiative for Youth (GPIY) was selected as the instrument in Fall of 2007 with some changes.
 - Survey was administered online to 198 students at Dodd Middle School in February 2008 and on paper to students at Cheshire High School in March 2008.
 - An online parent survey was also conducted during this same time period.
-

Four Core Measures/

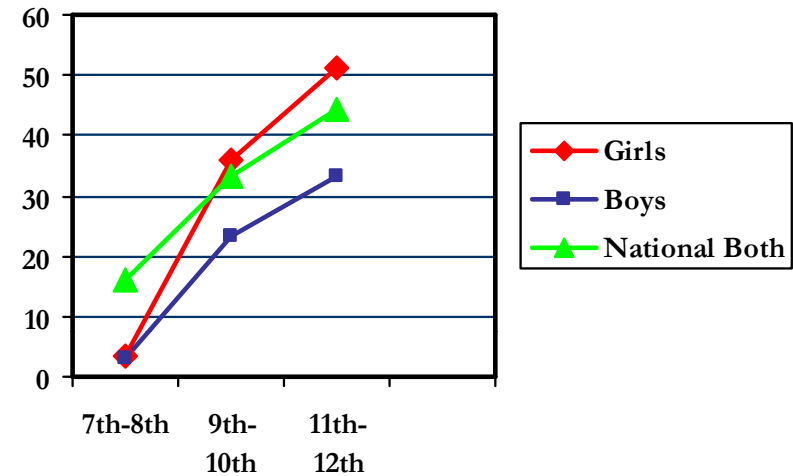
National Outcome Measures

- Cheshire Youth Survey asked questions on a wide range of issues within the five domains: individual, peer, family, school and community. It also asked about risky behaviors including violence, gambling and internet use both in relation to and independent of substance use.
 - NOMs: Defined as measurements selected by the Federal Government to monitor alcohol usage by youth across the country
 - 30 Day Use, Age of First Use, Perception of Risk/Harm of Use, Perception of Disapproval/Attitude
-

30 Day Alcohol Use



(student survey table 41)



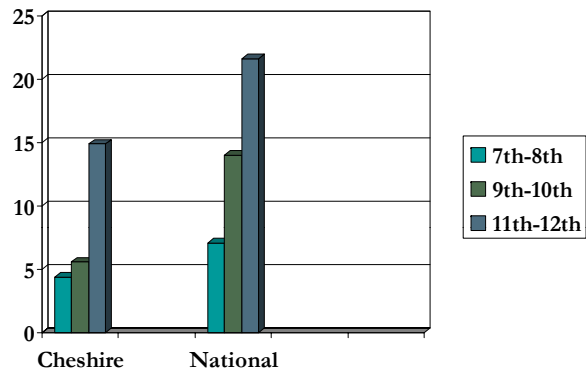
(student survey table 6)

- While few 7th and 8th graders are drinking, those that are drinking reported spending more time in the homes of friends.
- Each year since 1975, Monitoring the Future has surveyed a nationwide sample of high school seniors. Since 1991, the project has also included nationwide samples of 8th and 10th grade students. In addition, annual follow-up surveys are mailed to a sample of each graduating class for a number of years after their initial participation.

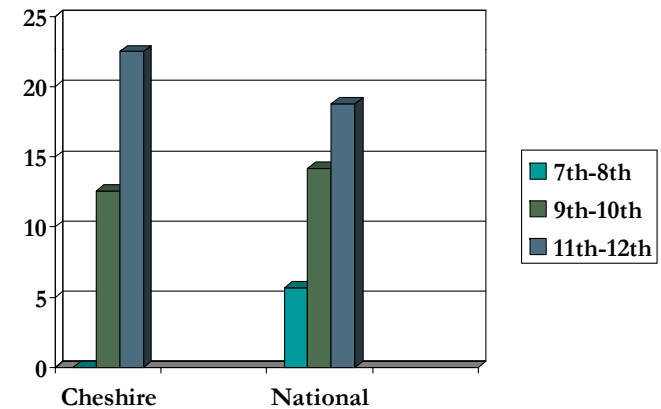
30 Day Use Cigarettes & Marijuana

(student survey table 41)

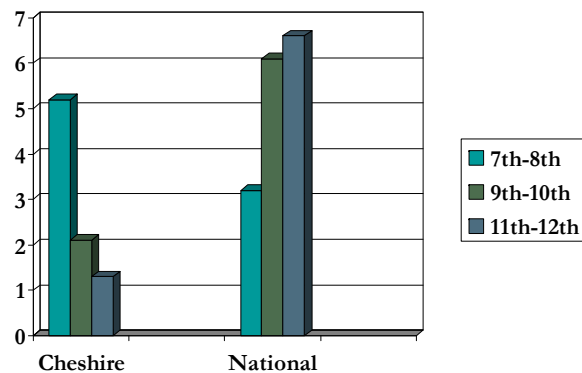
Cigarettes



Marijuana

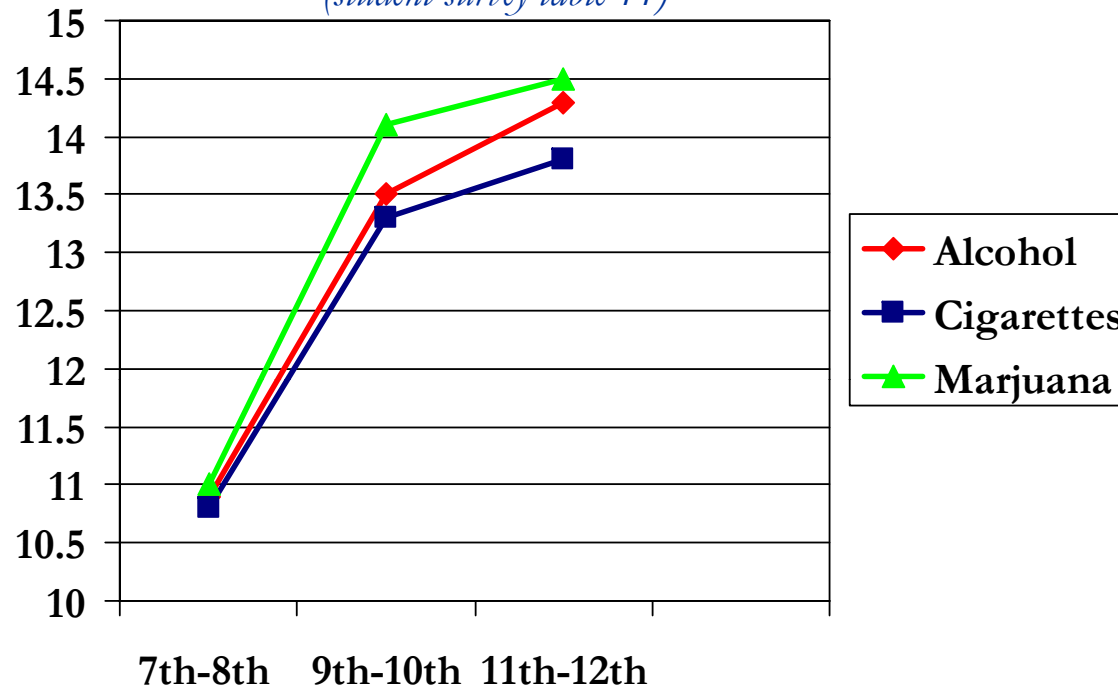


Non Cigarette Tobacco



Age of Initiation/First Use

(student survey table 11)



- Age of initiation for Cheshire Youth:

Alcohol: 7-8: 10.9 9-10:13.5 11-12: 14.3

Cigarettes: 7-8: 10.8 9-10: 13.3 11-12: 13.8

Marijuana: 7-8: 11.0 9-10: 14.1 11-12: 14.5

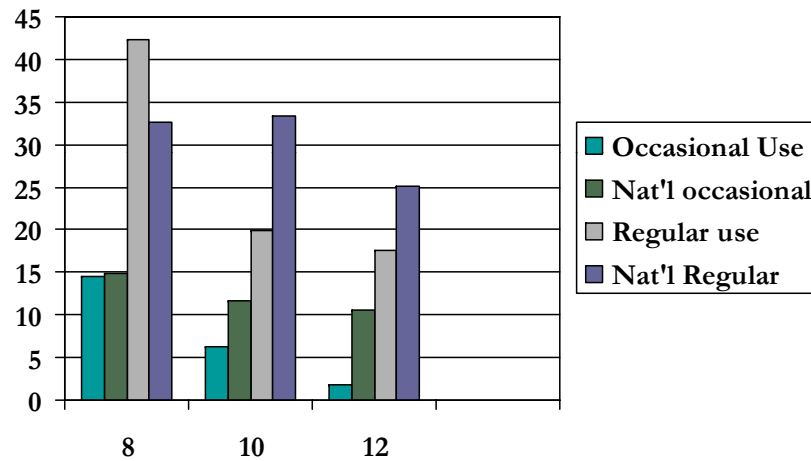
Age of Initiation/ First Use

- According to the 2007 Connecticut Youth Risky Behavior Survey, percentage of youth who:
 - smoked a cigarette before their 13th birthday: 15 yrs & younger 8.4%
 - Drank alcohol more than a few sips before their 13th birthday: 15 yrs or younger 22.8%
 - Smoked marijuana before their 13th birthday: 7.5 %
-

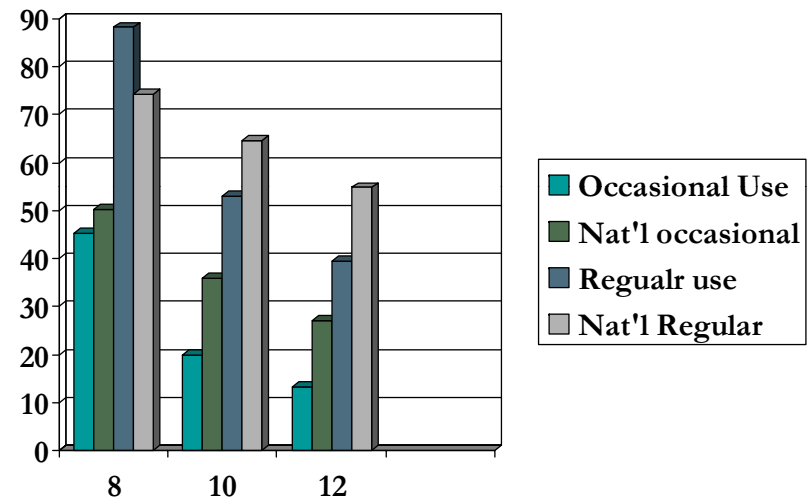
Perception of Risk/Harm

(Student survey table 42)

Alcohol



Marijuana



Low Perception of Harm=Higher Prevalence of Usage

Attribute to prevention efforts in town

Prevention Techniques

(Student Survey table 38)

How important do you think the following are in preventing kids from drinking alcohol?

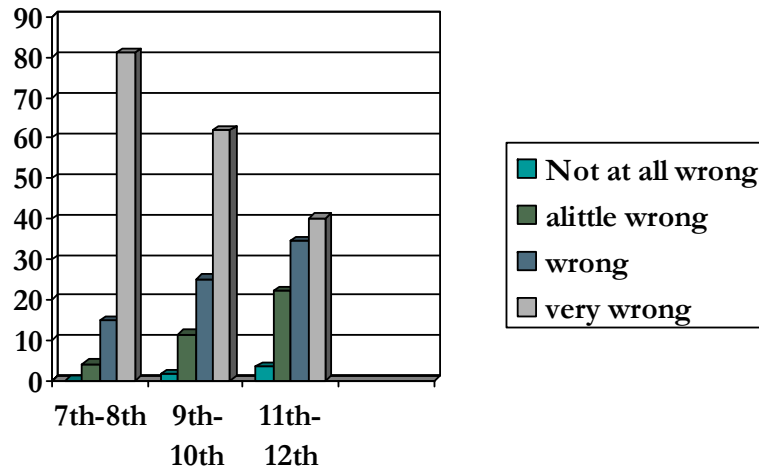
	7 th - 8 th	9 th -10 th	11 th -12 th
Parental Strictness about Drinking	66.9	43.5	36.5
Blood Alcohol or Breathalyzer Test in school/home	65.7	46.9	35.3
Losing Extracurricular Activities at School	58.7	45.8	38.6
Checking IDs in stores/bars	79.5	57.6	47.6
Being Suspended by Your Coach	67.0	47.9	53.1

Perception of Disapproval/Attitude

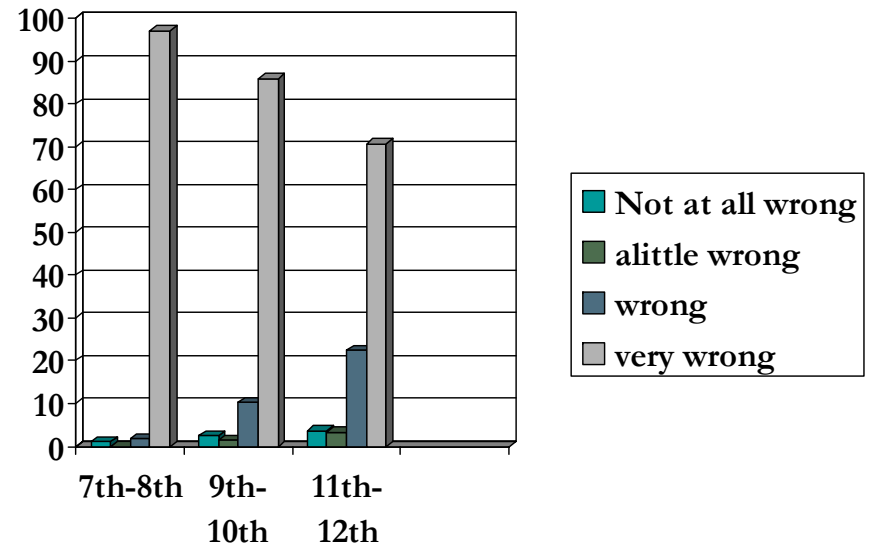
(student survey table 27)

How wrong do your parents/guardians feel it would be if you:

Drink beer, wine or hard liquor
(more than a few sips)?



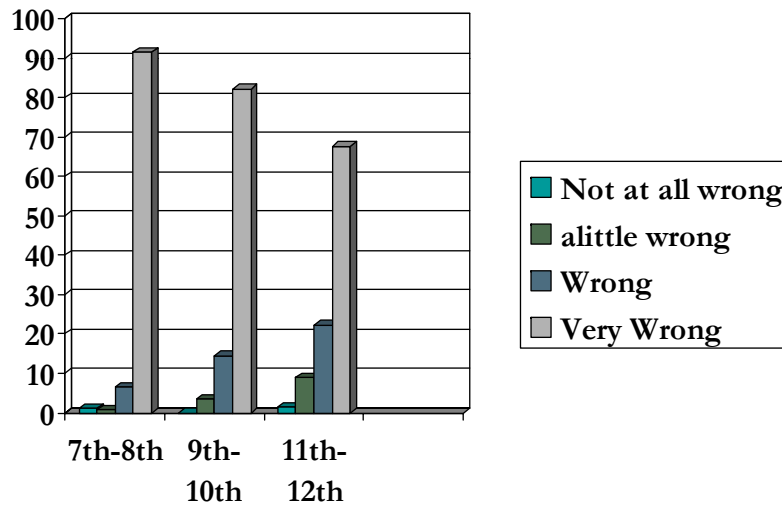
Use Marijuana?



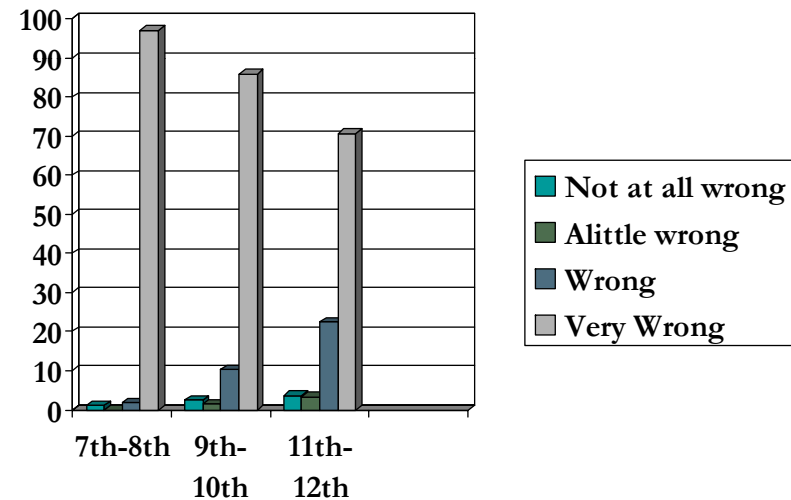
Perception of Disapproval/Attitude

How wrong do your parents/guardians feel it would be if you:

Smoke Cigarettes



Use Marijuana



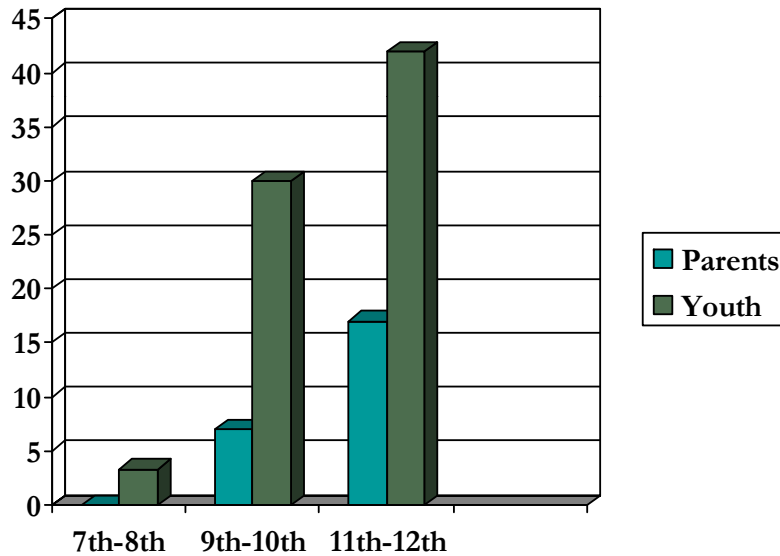
Parent Survey Results

- The top ranked issues facing parents of teens in Cheshire were alcohol and drugs.
 - Parents of high school youth underestimate the prevalence of alcohol consumption and cigarette use by their youth
 - Parents of older youth regarded substances as being more readily available than parents of younger youth, but most youth believed substances to be less readily available than their parents did.
 - Parents were more confident in family rules and discipline that discourage drinking than youth were.
 - Fewer than 10% of parents felt that they were more lenient about their child drinking than other parents.
 - 20% of middle school parents were not aware of the Social Host Law but almost all parents of older youth were.
 - Youth and parents agreed that thoughts and feelings were readily shared.
 - Youth and parents both believe that there is great harm in smoking cigarettes.
-

Parents Perceptions VS Youth Responses

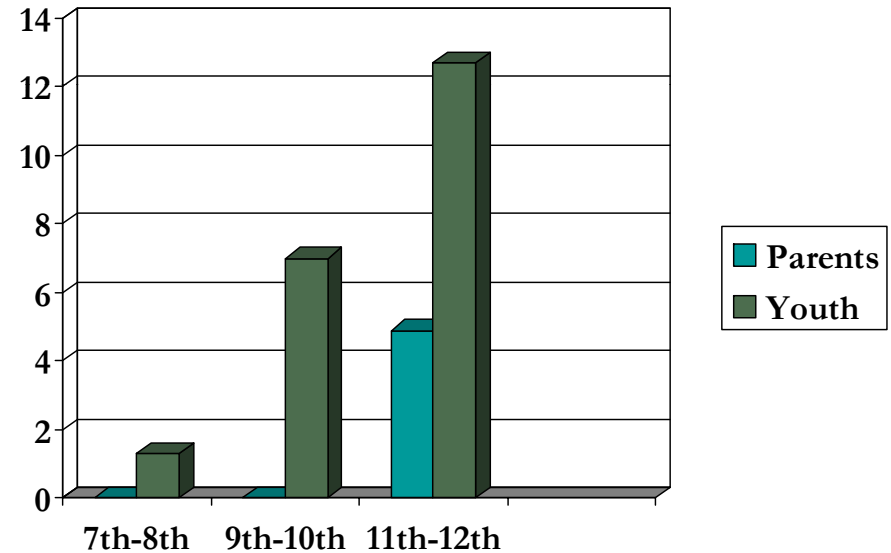
30 day alcohol use

(parent survey table 26)



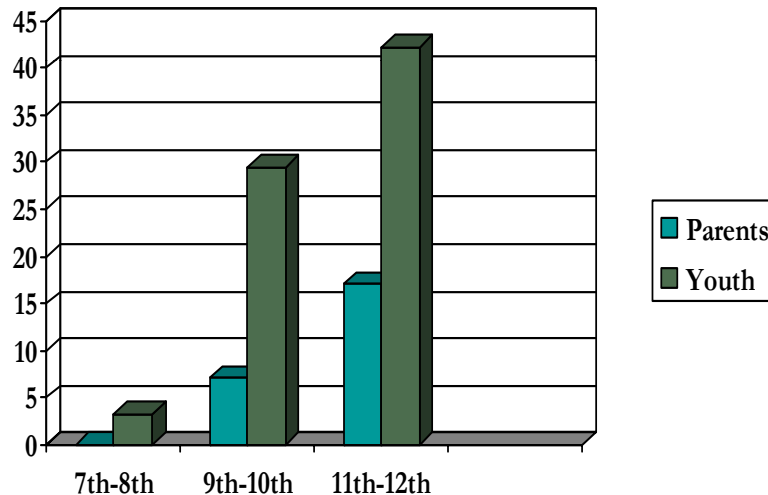
30 day cigarette use

(parent survey table 26)

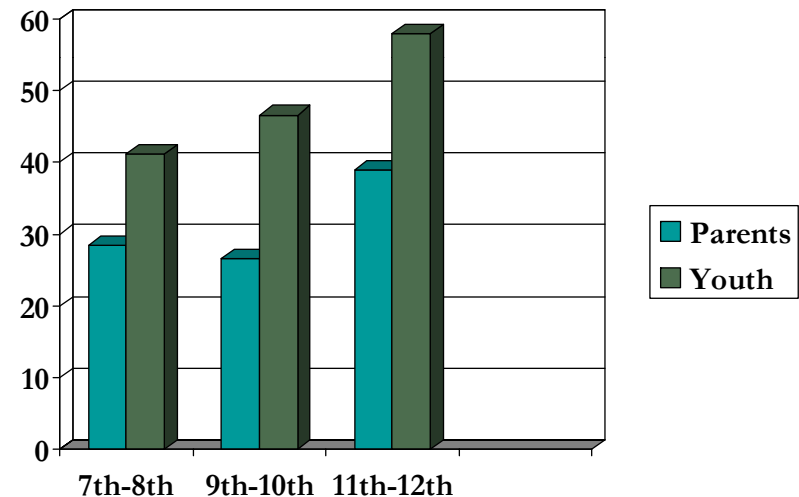


Parents Responses VS Youth Responses

30 day Marijuana Use
(parent survey table 26)



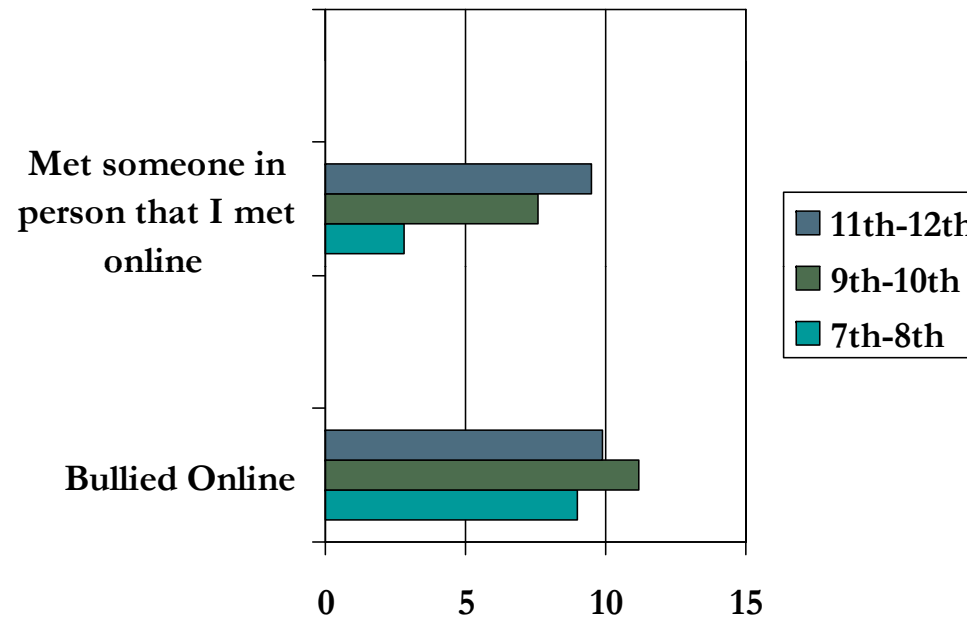
Home Without an Adult Present
(parent survey table 30)
mean scale score 0 not true 100 true



Youth reported spending more time after school on an average weekday without an adult present than their parents reported.

Cheshire Specific Questions

Cyberbullying activity percentages requested by the Superintendent's Office
(student survey table 26)



- Graph represents those students who reported that they agreed or strongly agreed with the questions
- Activities on the computer including using the internet, texting and bullying had higher rates of use amongst those students who reported drinking in the last 30 days. (tables 47& 48)

Cheshire Specific Questions

- Awareness of Cheshire School Policy on Smoking and Substance Use requested by Youth Services Committee (*student survey table 35*)

	7 th -8 th	9 th -10 th	11 th -12 th
Does your school have rules against tobacco on school grounds? Yes	95.2	96.4	93.9
What is the most severe thing likely to happen to a student who is caught at school smoking cigarettes or using smokless tobacco? Nothing	1.0	3.2	5.6
Sent to principal's office	1.5	5.4	3.9
Detention	3.3	4.1	13.1
Suspension	38.0	45.6	43.9
Expulsion	11.4	5.4	1.4
I don't know	44.9	36.3	32.1

	7th-8th	9th-10th	11th-12th
What is the most severe thing likely to happen to a student who is caught in school drinking alcohol at school	1.0	3.6	4.0
Nothing			
Sent to the Principal's Office	.03	2.8	0.0
Detention	.08	2.5	.6
Suspension	35.2	50.1	51.0
Expulsion	14.4	8.5	12.8
I Don't Know	48.3	32.4	31.6

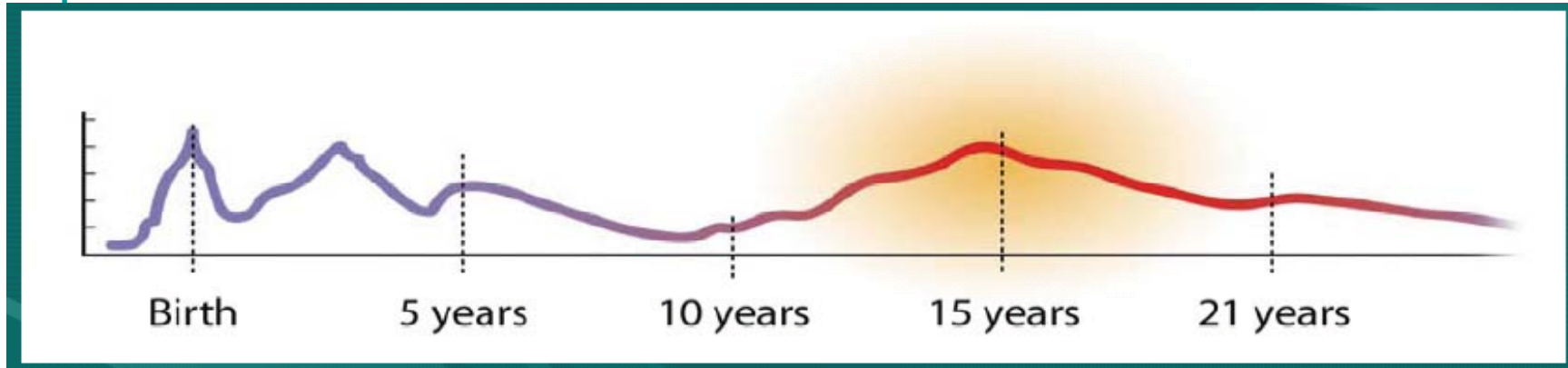
Do you know what happens when you are caught with alcohol at school the first time? NO	72.4	62.0	60.1
Second Time? NO	75.3	79.1	72.3
Third Time? NO	73.7	73.9	70.0

	7th-8th	9th-10th	11th-12th
What is the most severe think likely to happen to a student who is caught at school in possession of drugs (not alcohol or tobacco)?			
Nothing	2.8	4.9	1.2
Sent to the Principal's Office	1.0	1.1	.6
Detention	1.7	.9	.0
Suspension	20.2	26.4	32.5
Expulsion	32.1	34.1	32.0
I Don't Know	42.3	32.6	33.7
Do you know what happens when you are caught with drugs at school the First time? NO	67.8	57.8	58.1
Second Time? NO	78.0	74.6	70.0
Third Time? NO	75.9	75.7	72.0

Some of the Positives

- Youth report that they talk to their parents and their coaches the most when they have issues that are bothering them
 - The self image of a large majority of youth was positive with expressions of confidence and few signs of depression
 - Both youth and their parents report generally feeling their school and the community are safe
 - Prevalence of use of all substances by 8th graders was less in Cheshire than nationally but prevalence among 12th graders approached national averages for marijuana, hallucinogens and cocaine
-

Alcohol and the Teen Brain



Peaks of Brain Plasticity (defined as times when the brain is most capable of making neural connections) occur throughout childhood. One of highest peaks is during adolescence. According to the American Medical Association, introducing alcohol during this time can result in both short and long term growth processes deficiencies. The Prefrontal area and Hippocampus are the most affected areas.

Source: American Medical Association, 2007

What is the Community Doing?

CCSUD

- Offering Courageous Parenting 101 in October/November – 4 part parenting workshops
- Launching Social Marketing Campaign “Don’t Provide, Don’t Ignore, Don’t Excuse”
- Collaborating with the Cheshire Human Services Committee to host Alcohol Awareness Week in April 2009
- 4 Community meetings with Guest Speakers
- Supporting ongoing enforcement efforts of Cheshire Police Department
- Parent Connection Newsletters
- E News Blasts online
- Website

CHESHIRE PUBLIC SCHOOLS

- K-12 Developmental Guidance Program - Lessons support good decision making and developing refusal skills in dealing with peer pressure
- DARE Program Grade 6
- 7,8 Full-time Health Teacher - all students receive direct instruction in preventing substance abuse
- CHS Peer Health Educator Program - Students from CHS inform students in grades 4-9 about the dangers associated with drug and alcohol use.
- 7-12 Drug and Alcohol Counselor
- K-12 Social Work/School Psychology Support
- Clinical Psychologist Evaluation and Support for individual cases

What is the Community Doing?

POLICE DEPARTMENT

- Formed the Underage Drinking Task Force focusing efforts on nights, weekends, holidays and community events where underage drinking has occurred.
- Submitted a grant to Department of Transportation for \$13,347.30 to support the "Underage Drinking Task Force". About \$1,200.00 set aside for educational instruction within the high school.
- Distributed mini ultra violet lights to all Cheshire Police and local merchants to assist in forgery detection
- Distributed License Fraud Detection Lenses to all merchants to assist in forgery detection
- Increased frequency of compliance check and event/party patrols
- Hosted TIPS information session for merchants
- Purchased new equipment to use during surveillance efforts

YOUTH & SOCIAL SERVICES

- Positive youth development programs/leadership development programs for high school and middle school youth.
 - Mentoring programs which pair up younger children with high school aged mentors who serve as role models.
 - Friday night socials for high school students and Saturday night socials for middle school students.
 - Community Service opportunities.
 - Prevention and education programs for youth and their parents.
 - Adolescent support groups.
 - After school drop in programs.
 - Adolescent and family counseling.
 - Alternative to suspension/alcohol education program for 1st offenders of the school's policy on alcohol tobacco and other drugs.
-

Love as a Parent, Not as a Friend

provide

DON'T

DON'T

excuse

- Parents are the most powerful influence in their child's behavior. Youth state that their parents' disapproval of underage drinking and other risky behaviors is the number one reason they abstain.
- Monitor your child's behavior and activities, set clear boundaries, communicate often about all different things, be consistent in your message.
- The brain goes through the second largest developmental spurt during the ages of 12-21. Exposure to alcohol causes serious damage to the long- and short-term growth process.

Alcohol is the leading cause of death for young people. We ask kids to stand up to peer pressure, but the truth is we're afraid to stand up to them. We're afraid we're going to lose their love if we say no. What we should be afraid of is losing our kids. Tell them "I love you too much; you can't go." Hold your ground, don't provide, ignore or excuse the use of alcohol with kids.

DON'T *ignore*



cheshirecoalition
tostopunderagedrinking

(203)271-6690
postmaster@cheshirecsud.org
www.cheshirecsud.org

For More Information

- www.cheshirecsud.org
- www.monitoringthefuture.org
- www.parentsempowered.org – state of Utah
- Cheshire Youth and Social Services 271-6690
- Roundtable discussion immediately following Questions and Answer period in the Lounge

